

icoone[®]
TALKS

**JUST FOR
INNOVATORS**

by i-Tech Industries



icoone®
TALKS

JUST FOR
INNOVATORS

The power of icoone® Medical microstimulations in the breast cancer rehabilitation

Jocelyne Rolland

Physiotherapist Senologist, specialist in care of women after breast cancer surgery. Sponsor of the Breast Physiotherapists Network, RKS. Trainer of more than 1000 physiotherapists. Member of the AFSOS and the MASCC, association of supportive care in cancer



Physiotherapy helps fight the side effects of the following treatments:

- Surgery: Breast / Axillary gesture
 - Chemotherapy
 - Radiotherapy
 - Hormone therapy
 - Targeted therapies
 - Reconstruction
-
- At each stage of the journey
 - For all women (and men 1%)
 - Regardless of the importance of the treatments



GOALS

- Flexibility
- Strength
- Painless
- Aesthetic of impacted areas

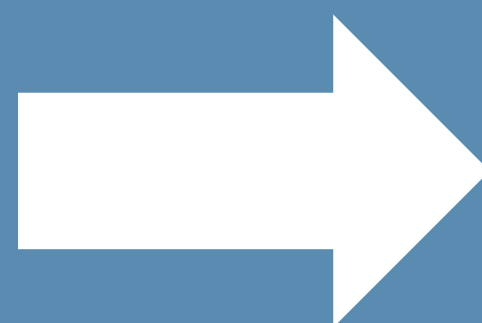


- Shoulder-arm Function
 - Quality of life
 - Physical activity

Physiotherapy and Senology

Physiotherapy helps fight the side effects of the following treatments:

- Scars
- Stiffness
- Fibrosis
- Breast Protection Attitude
- Sarcopenia
- Scarring ransoms
- Lymphedemas
- Pain



TECHNIQUES

- HANDS ON
- HANDS OFF
- ICOONE®

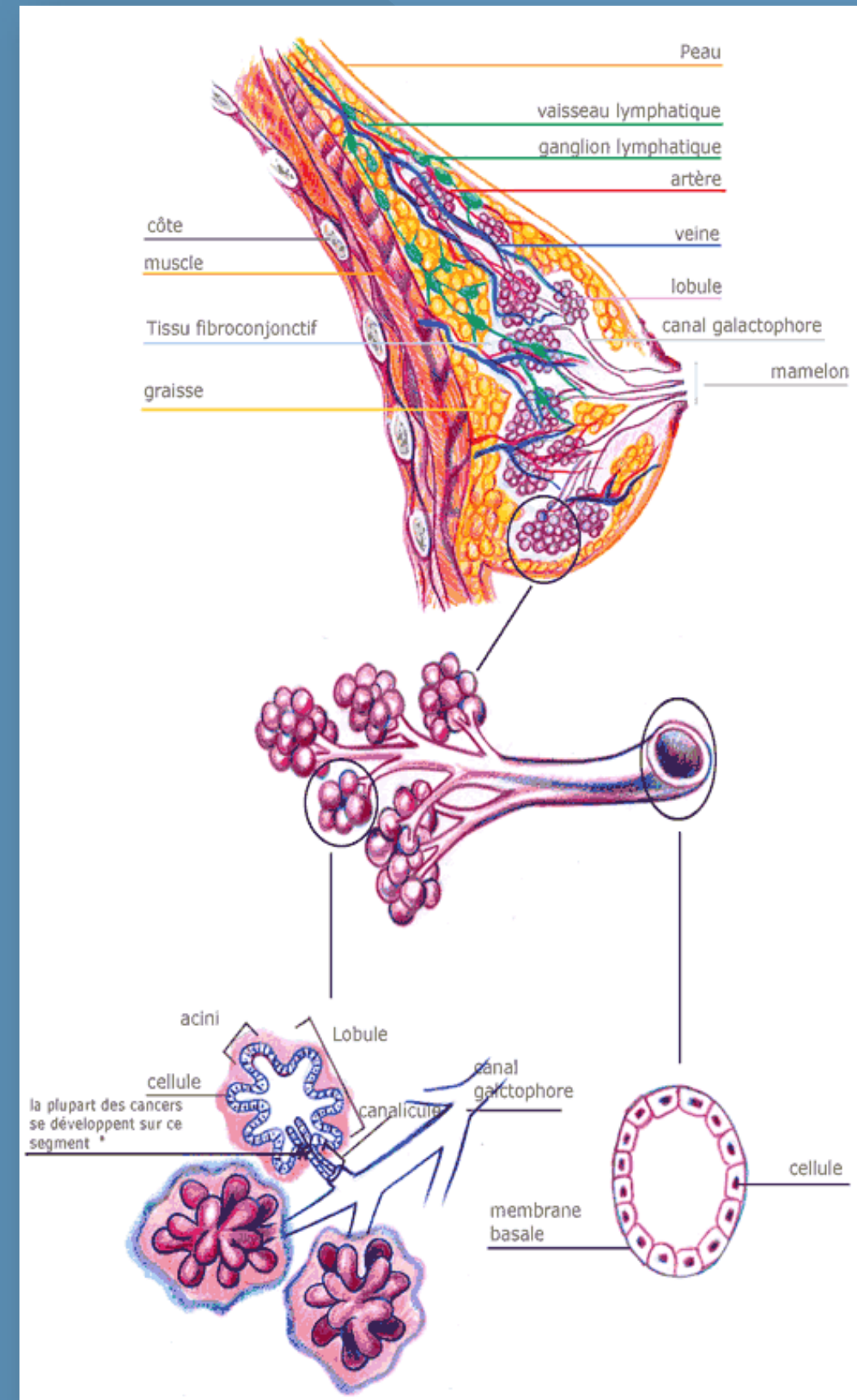


icoone® Medical

- Mechanical and painless, non-invasive;
- Perfect acceptance of patients;
- Effective deep stimulation of connective tissue;
- Obvious results even on delicate and problematic skin;
- Visible and palpable results from the first application.



BREAST =
Gland +
Fat +
Connective
Tissue +
Blood Vessels
+
Lymphatics



icoone® Medical:
ideal technology for acts
in senology.

icoone® Medical, the only device in the world, with the innovative Roboderm® patent, capable of performing Multi Micro Alveolar Stimulation (M.M.A.S), reaching up to 21,600 microstimulations per minute



Breast operated, irradiated,
edematous, reconstructed.

icoone® Medical in Senology

- Hand support
Action of the microstimulators with one or two hands
- Time saving for reaching results:
Fibrosis reduction
Soft Tissue release
- Gentleness and effectiveness
Pleasant contact
Feeling of efficiency
- Solicitation on the fibrous structure of the tissue
Superficial
Deep
- In association with the knowledge of physiotherapy in senology



S
C
A
R



L
Y
M
P
H
E
D
E
M
A



F
I
B
R
O
S
I
S



R
E
C
O
N
S
T
R
U
C
T
I
O
N



Applications icoone[®] Medical in senology

1. SCARRING TISSUE

Goals :

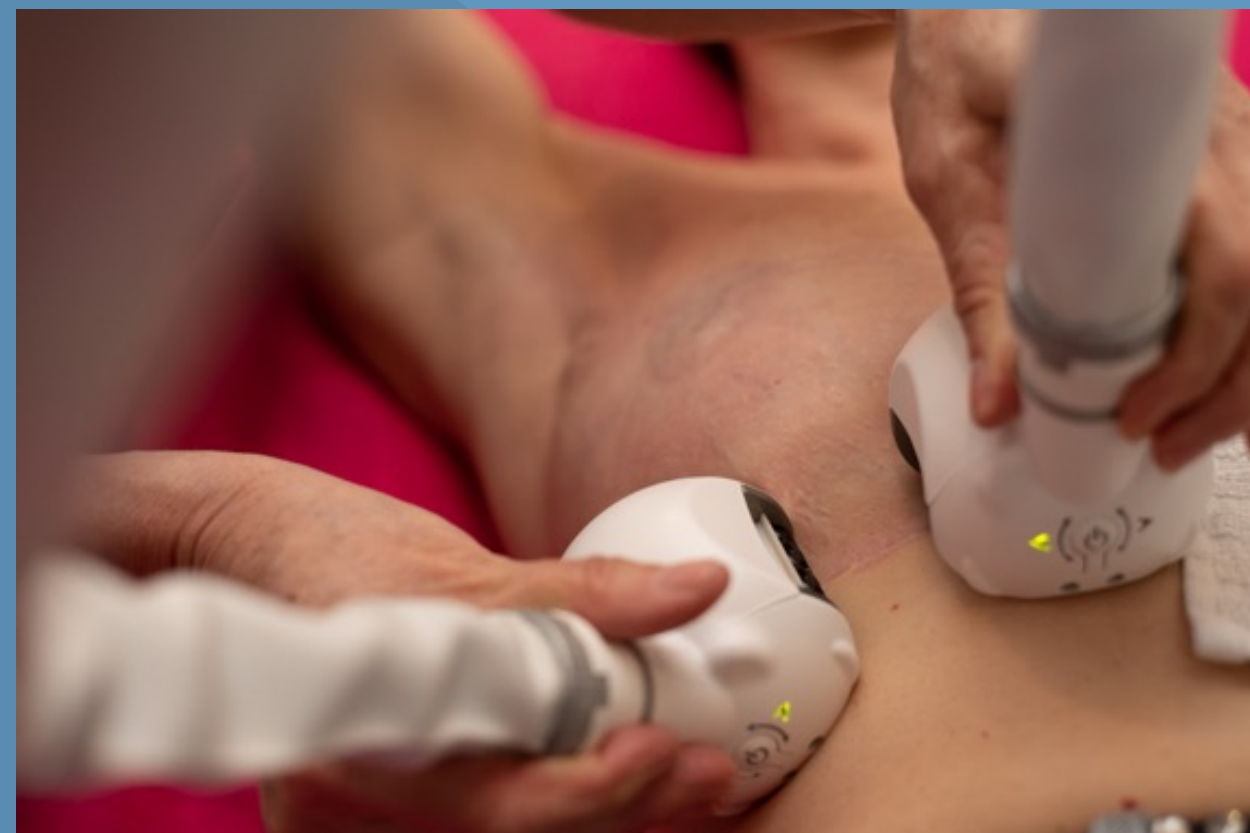
- Limit the functional and aesthetic sequelae of scars for an optimal quality of life.
- Use specific microstimulations to:
 - remove residual adhesions,
 - soften the surrounding tissues,
 - drain the inflammation,
 - make the scars less visible



Mastectomy



DIEP



SCARRING TISSUE

Specificity of icoone® Medical application in senology:

- Use Robomini / Robotwins handpieces in order to strain the tissue more than the scar line itself.
- Change the position of the breast, of the wall, of the donor area and of the receiving area for a deeper stimulation thanks to a better grab on the tissues.
Start with a position that relaxes the tissues thanks to the gravity for an easy grab.
- The duration of the application depends on the density of the tissues, rarely more than 5 minutes for scar.

Applications icoone[®] Medical in senology

2. FIBROSIS

Goals :

- Free the connective tissue,
- Drain lymphatic fluids,
- Reduce discomfort, edema, neuropathic pain,
- Release the range of motion blocked by this fibrosis,
- Prepare other surgical procedures,
- Regain the flexibility and freedom of the tissues.



Pectoralis tightness

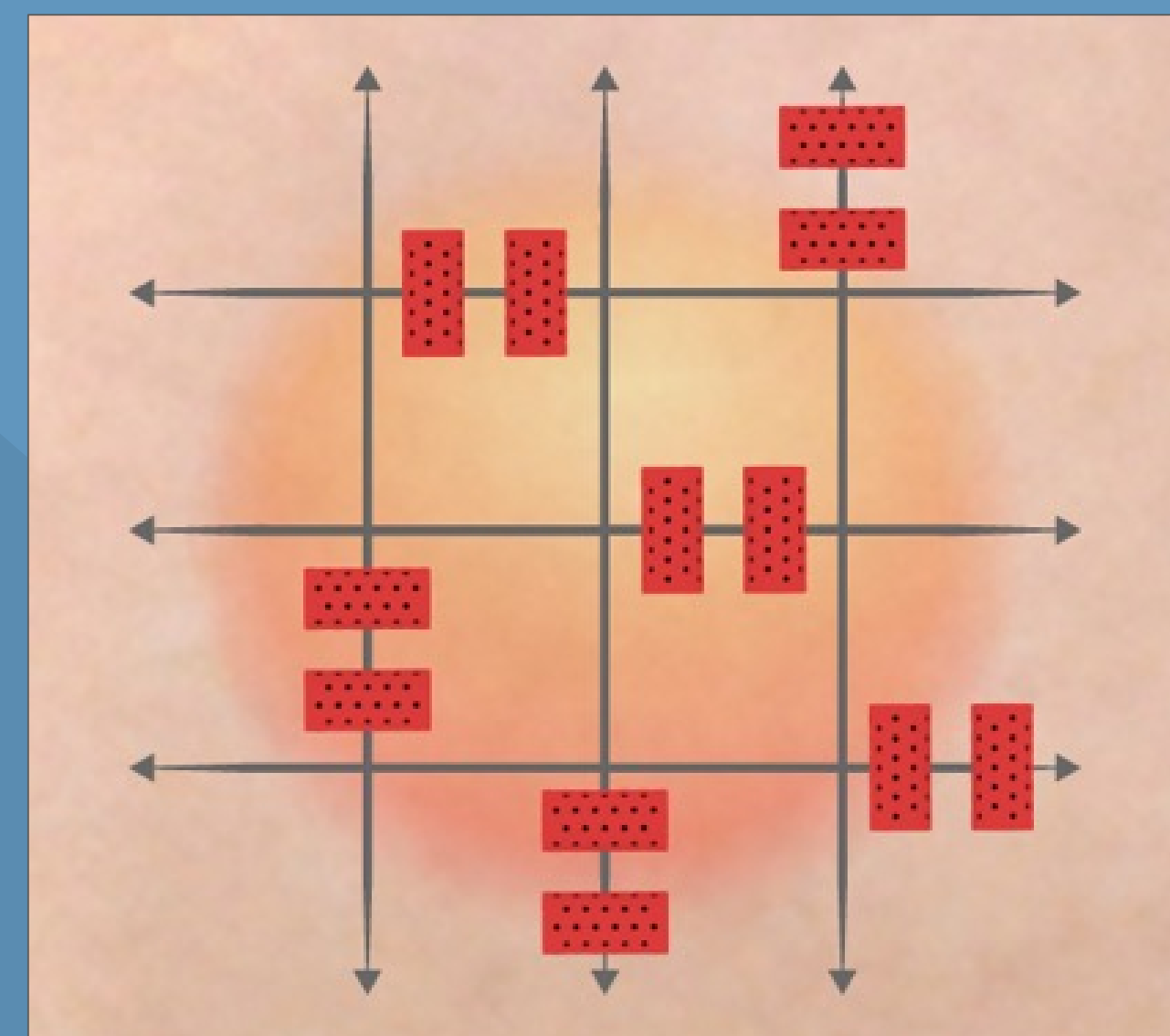
F
I
B
R
O
S
I
S



FIBROSIS

icoone® Medical protocol

- Start with a grid action on the fibrous area with the two Robomini.
- Then back and forth tensioning the tissue.
- Then combine draining movements towards the nearby lymphatic nodes.
- Complete the results obtained at each session with a taping pose.
- Complete with stretching of the underlying muscles in order to sustain the results.



Applications icoone® Medical in senology

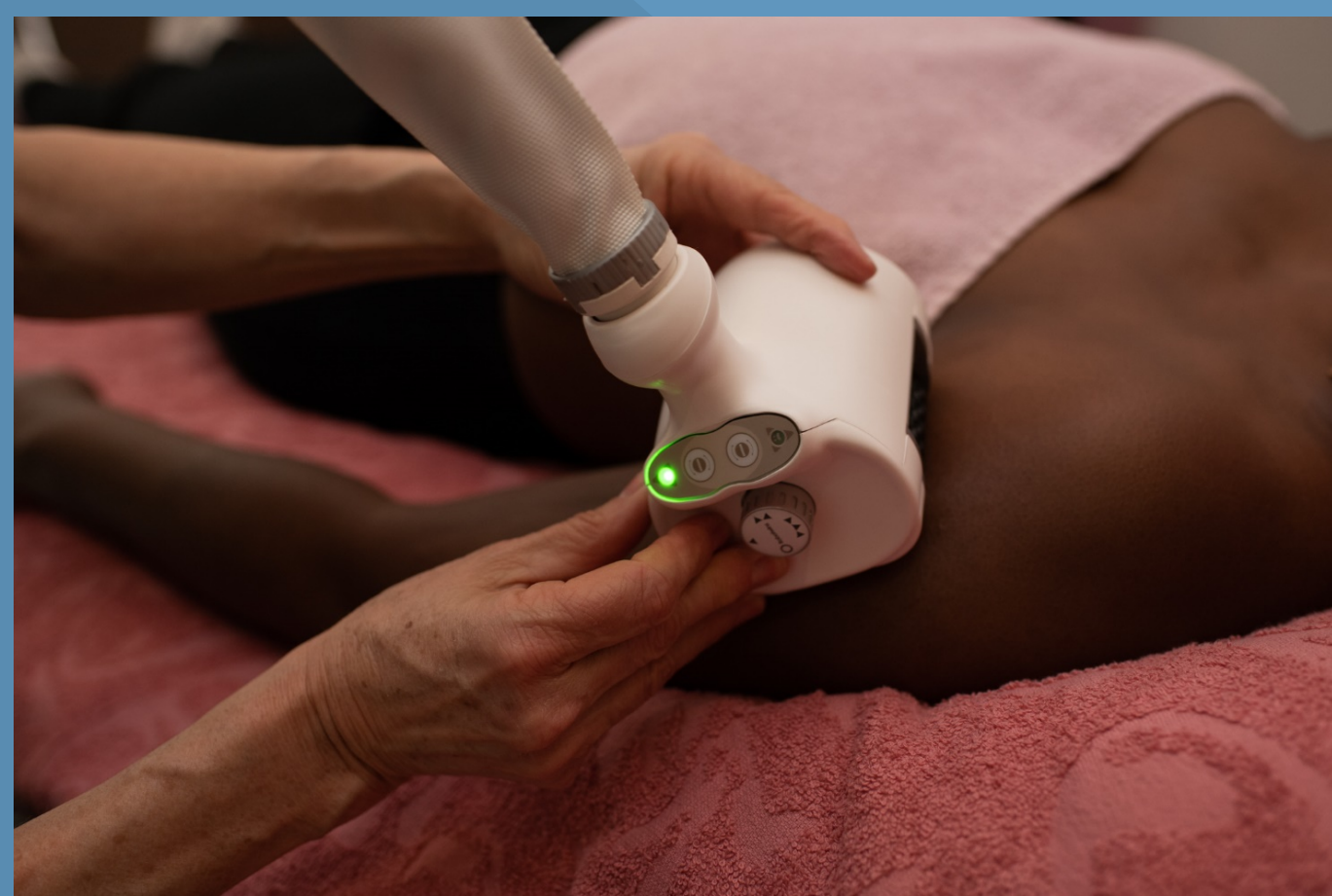
3. LYMPHEDEMA

Goals :

- Stretch the subcutaneous tissue,
- Free the trapped lymphatic fluids,
- Avoid the fibrous transformation of the edema,
- Complete with physical activity.



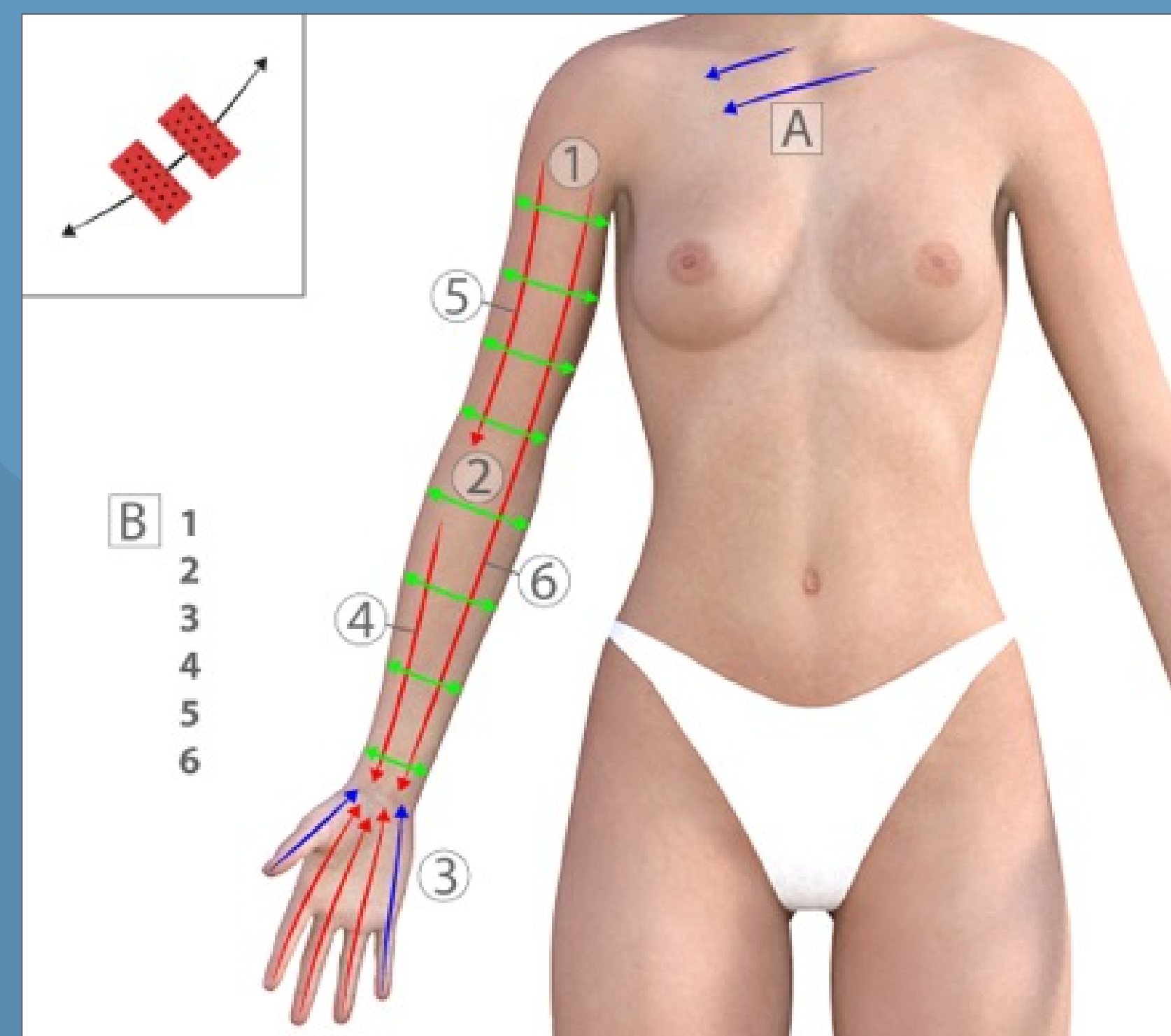
L
Y
M
P
H
E
D
E
M
A



LYMPHEDEMA

Specificity of the application in senology:

- Use Robomini / Robotwin handpieces in order to stimulate the tissue of the breast or upper limb and peripheral drainage areas: underarm, décolleté, side of the chest, back and abdomen.
- The duration of the application depends on the reactivity of the tissues; the density of the breast or upper limb should decrease during the application.
- The skin should not heat up; don't stimulate the hemithorax for more than 10 minutes.



Applications icoone® Medical in senology

4. BREAST RECONSTRUCTION

Goals :

- Immediate breast reconstruction: treat tissue donor areas in case of flap or liposuction
- Secondary reconstruction:
 - Maintain the flexibility of the chest scar, the receiving area of a new breast
 - Prepare donor areas in case of flap or liposuction
 - After surgery
 - ✓ Donor areas to be treated
 - ✓ Receiving areas to be maintained.



Applications icoone[®] Medical in senology

BREAST RECONSTRUCTION

Lipofilling:

- Donor areas to be treated to prepare the lipoaspiration
- Receiving area will be treated after at least 6 weeks rest;
- Soften an established fibrosis if necessary.
- Deep microstimulations action specific to soften and release the connective tissue, fats, ecchymosis, hematomas of the receiving and donor tissues.



R
E
C
O
N
S
T
R
U
C
T
I
O
N



BREAST RECONSTRUCTION

Specificity of the application in senology:

- Use Robomini handpieces on the reconstructed breast shell and on the scars.
- Use Robotwins handpieces on the scar ransom, the belly and the back, the donor areas.
- The duration of the application depends on the density of tissues to be prepared, on the importance of the troubles brought by the reconstruction.



R
E
C
O
N
S
T
R
U
C
T
I
O
N

icoone[®]
TALKS

JUST FOR
INNOVATORS

i-Tech[®]
INDUSTRIES
The science of skin

QUESTIONS & ANSWERS



Contact :

jr@jocelynerolland.com
www.sereconstruireendouceur.com



jocelyne.rolland



rosepilates



avironindoorcancerdusein



jocelynerolland.kine



jocelyne rolland kine

icoone[®]
TALKS

**JUST FOR
INNOVATORS**

by i-Tech Industries

